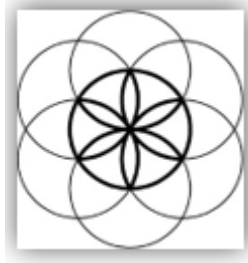


# Pulsed Frequency™



## MR7 Basic Software Download, Installation and User Guide

## Contents

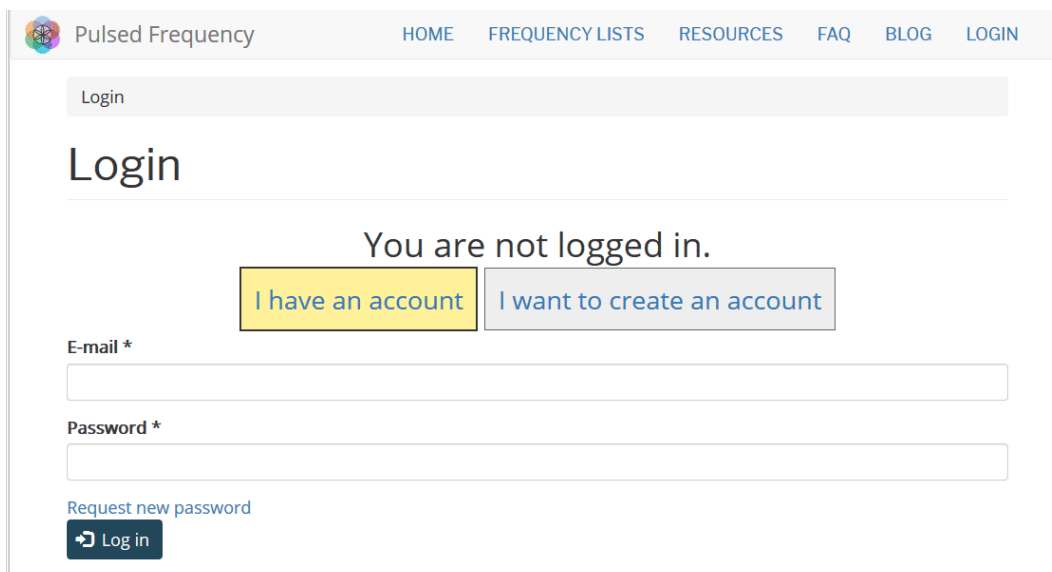
Account Registration.....	3
Create an Account.....	4
Download the Software .....	6
Chrome.....	7
Edge.....	8
Firefox .....	10
Install the Software.....	12
Just Feel Better! .....	17
Connect MR7 to Your Computer.....	19
Load a Program into the MR7.....	21
Check for Software Updates .....	22
Troubleshooting.....	24
MR7 Manual Detection.....	27

# Account Registration

To download the Pulsed Frequency software, please go to [www.pulsedfrequency.com](http://www.pulsedfrequency.com).



Click where the arrow is pointing. You will be taken to a Login screen.



If you already have an account, click **I have an account**. Enter your email address and password and then click **Log in**.

# Create an Account

If you do not have an account, select **I want to create an account**.

The screenshot shows the Pulsed Frequency website's login page. At the top, there is a navigation menu with links for HOME, FREQUENCY, SOFTWARE, TESTIMONIALS, FREQUENCY LISTS, RESOURCES, and WEBINARS. Below the menu is a 'LOGIN' section. A 'Login' button is visible. A message states 'You are not logged in.' with two buttons: 'I have an account' and 'I want to create an account'. Below this is a note to check the spam folder for a confirmation email, an 'E-mail \*' input field, and a 'Create new account' button. The footer contains copyright information for 2016-2018 Pulsed Frequency and a 'Contact Us' link.

Enter your email address, then click **Create new account**. Further instructions will then be sent to your email address. The confirmation email will look something like this.



Click on the link in the email and you will be taken back to the website to reset your password.

You have just used your one-time login link. It is no longer necessary to use this link to log in. Please change your password. ×

[View](#) [Edit](#) [Orders](#)

E-mail address \*

Password

Confirm password

Email updates  
 Subscribe

Locale settings  
Time zone

Enter a New password in both fields.

You have just used your one-time login link. It is no longer necessary to use this link to log in. Please change your password. ×

[View](#) [Edit](#) [Orders](#)

E-mail address \*

Password  
 ✓

Confirm password  
 ✓

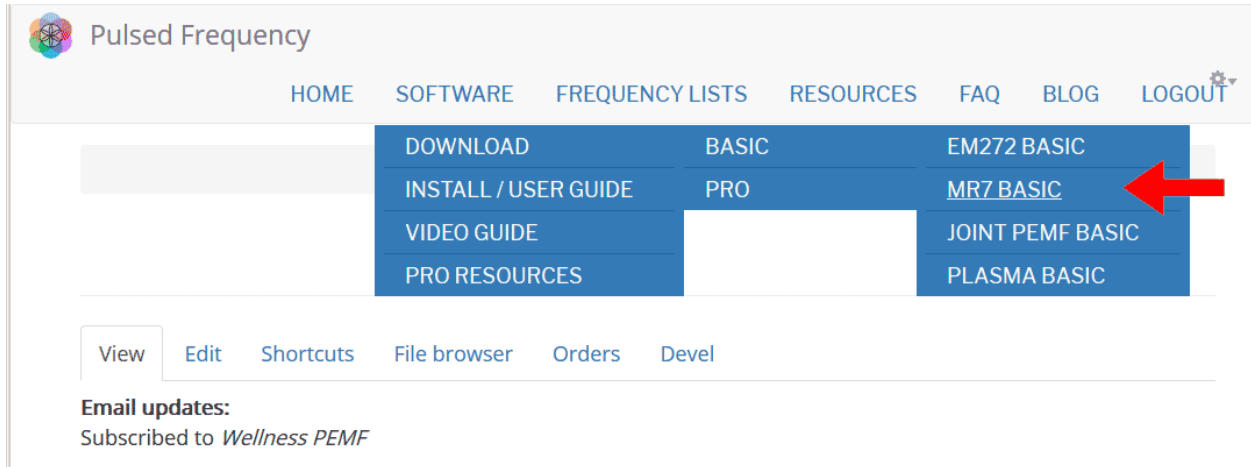
Email updates  
 Subscribe

Locale settings  
Time zone

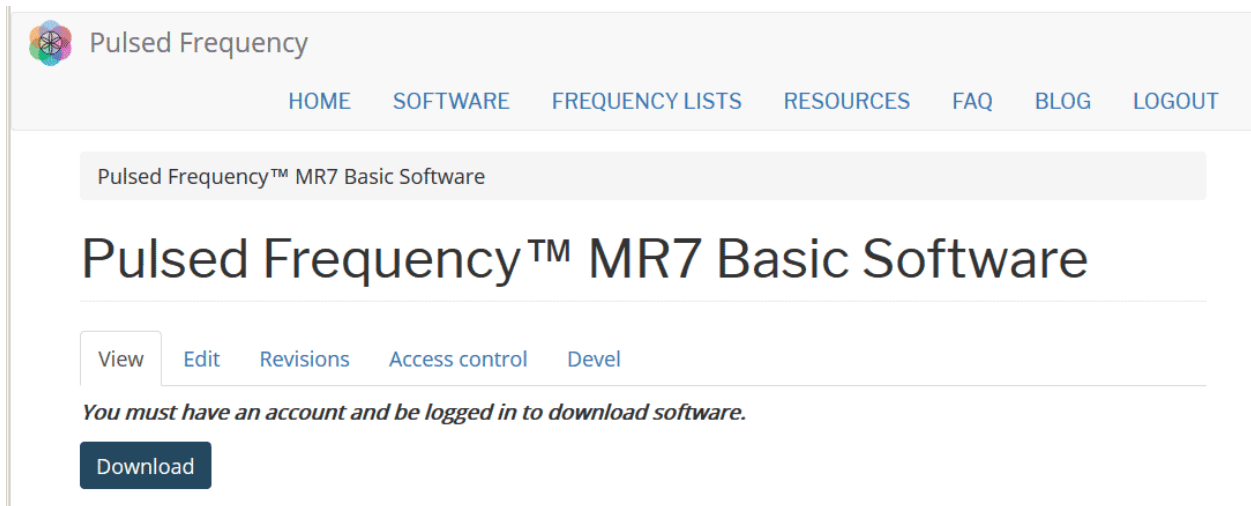
After you have changed your password, click the **Save** button. You will be told that the changes have been saved.

# Download the Software

If you aren't already logged in, log into your account, then click the Software menu item.



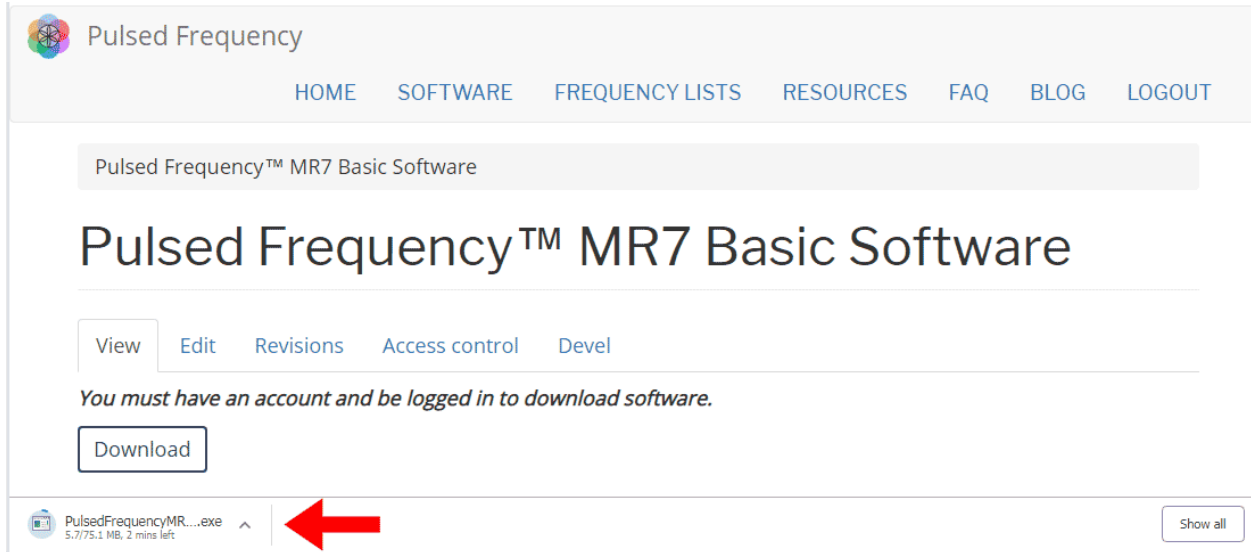
Point to **Download**, point to **Basic**, then click **MR7 Basic**. When you do this, you will be taken to the following page.



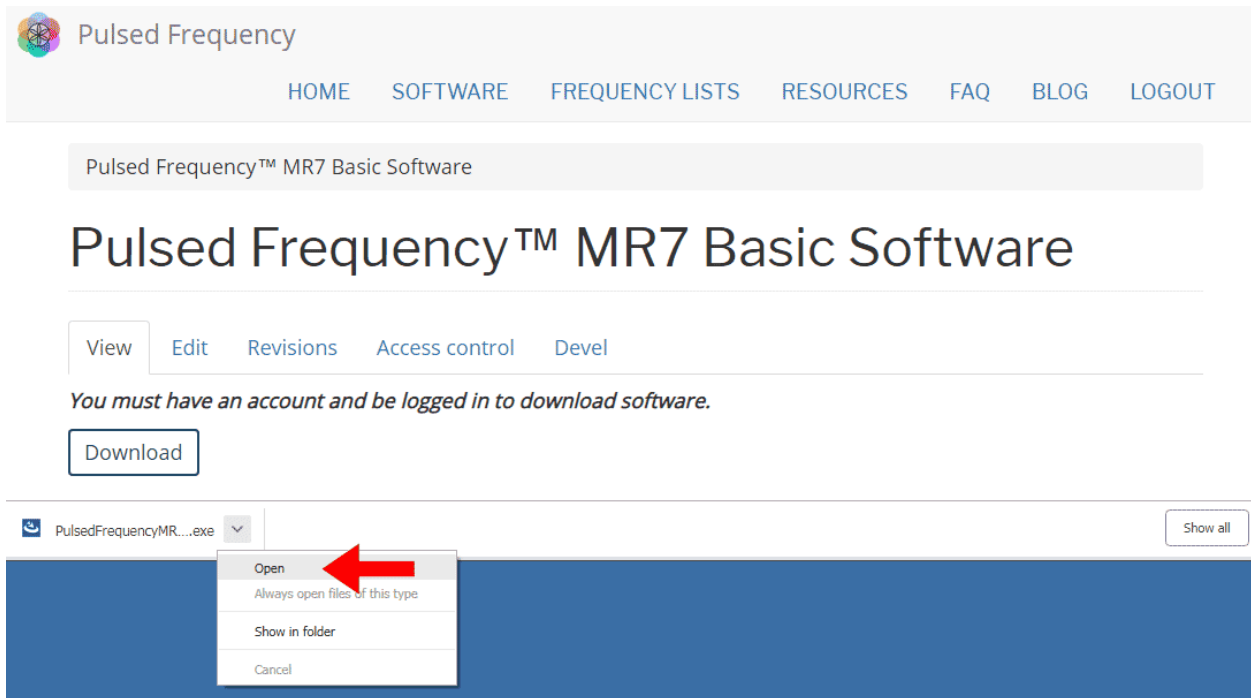
Click the **Download** button.

What happens next depends on the web browser you are using. Here are instructions specific to the three main browsers being used today.

# Chrome



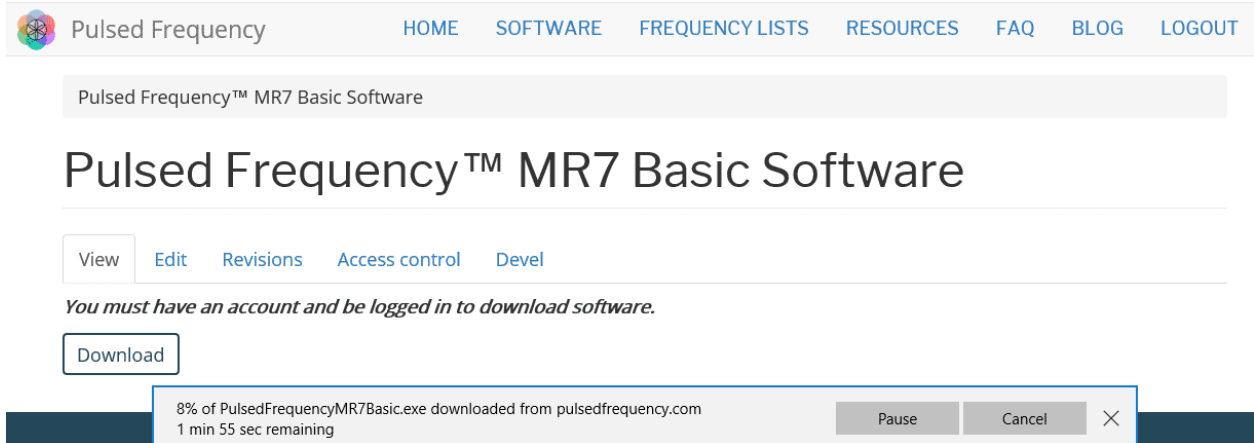
When you click the **Download** button, a notification displays in the lower left hand corner of the browser that alerts you to the file being downloaded. You will see the number of bytes that have been downloaded and the total size of the file.



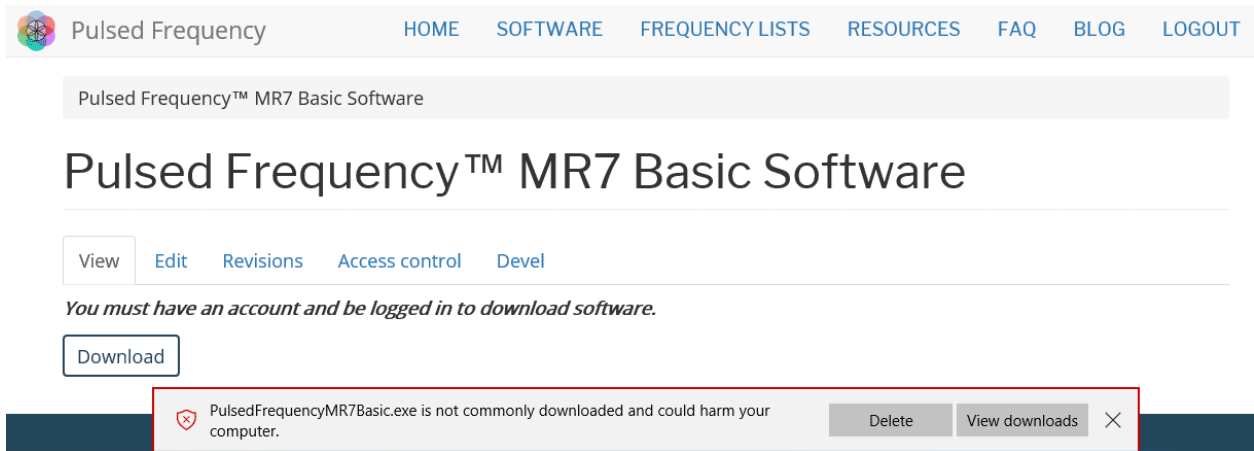
When the file download has completed, click the down arrow and then click **Open**. This will run the installation program for the **MR7Basicssoftware**.

# Edge

When you click the **Download** button, a small rectangular window will display at the bottom of the screen.

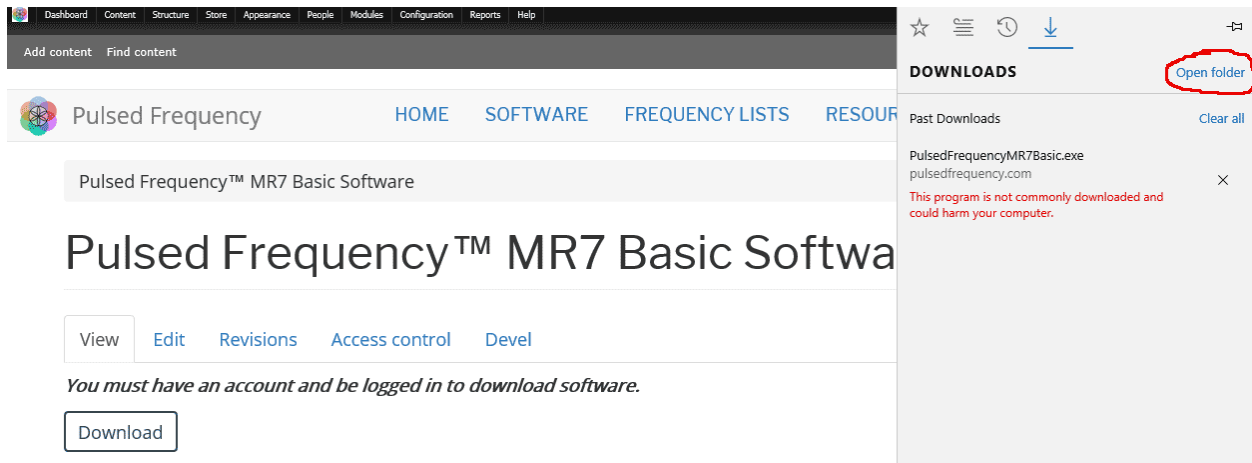


This window will show the progress of the file being downloaded.

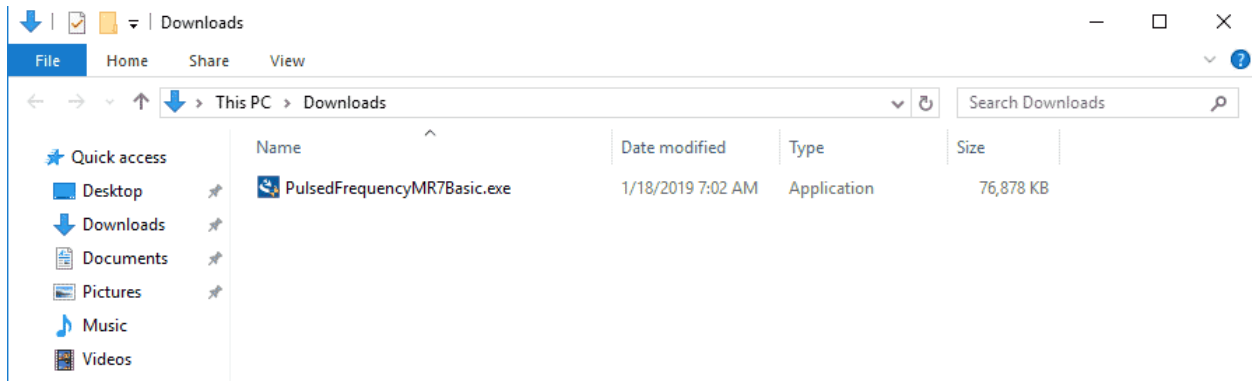


When file download has completed, click the **View Downloads** button.





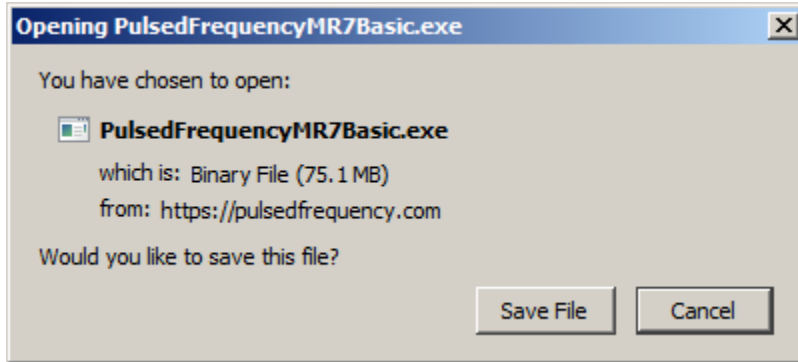
In the upper right hand corner of the screen above, click **Open Folder**.



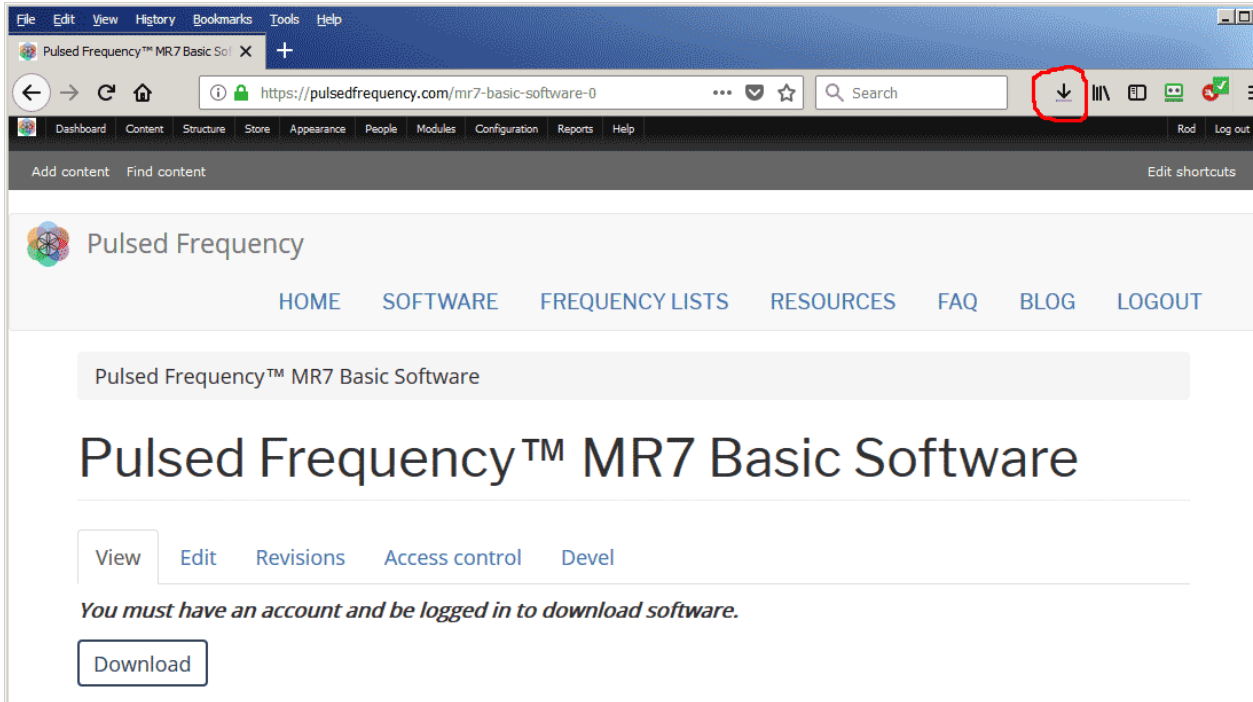
Double-click **PulsedFrequencyMR7Basic.exe** to run the installation program for the **MR7 Basic** software.

# Firefox

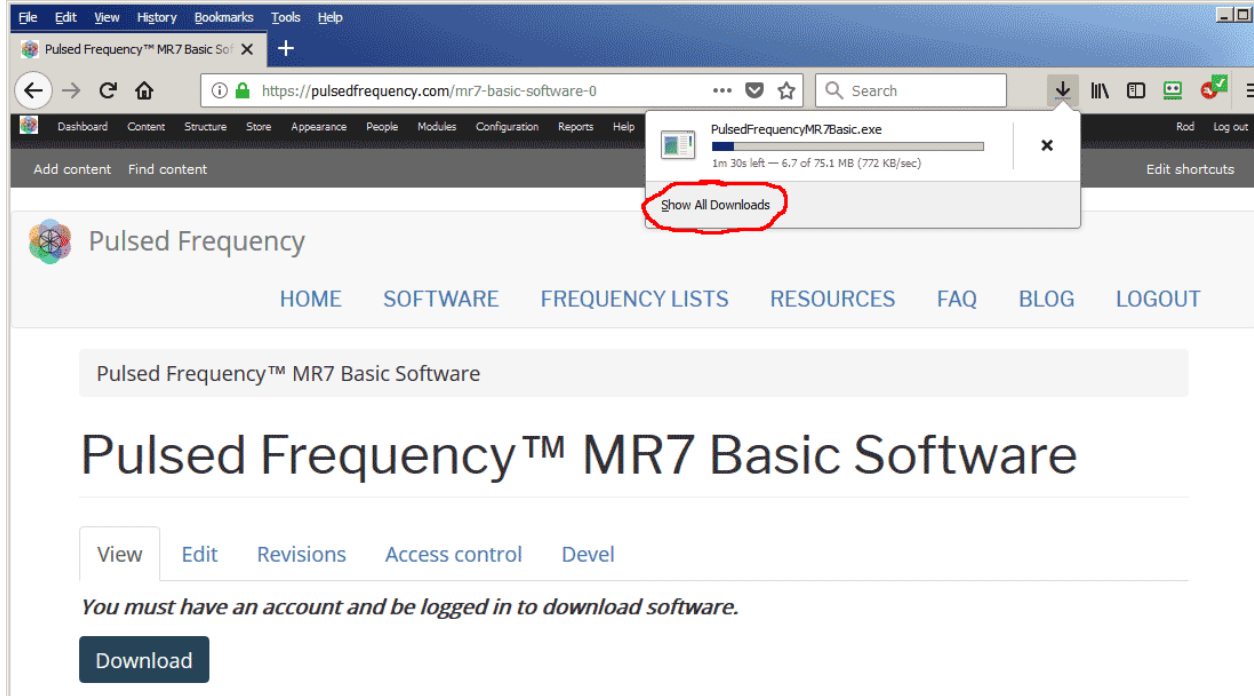
When you clicked the **Download** button, the following dialog box popped up.



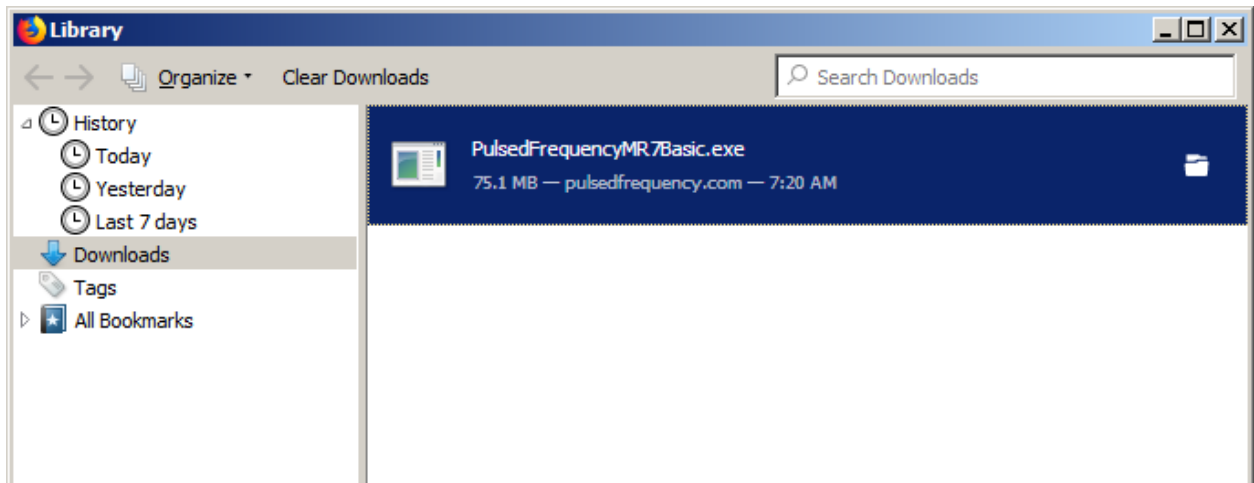
In this dialog box, click the **Save File** button.



Next, go to the upper right hand corner of the browser and click the **Down Arrow**.



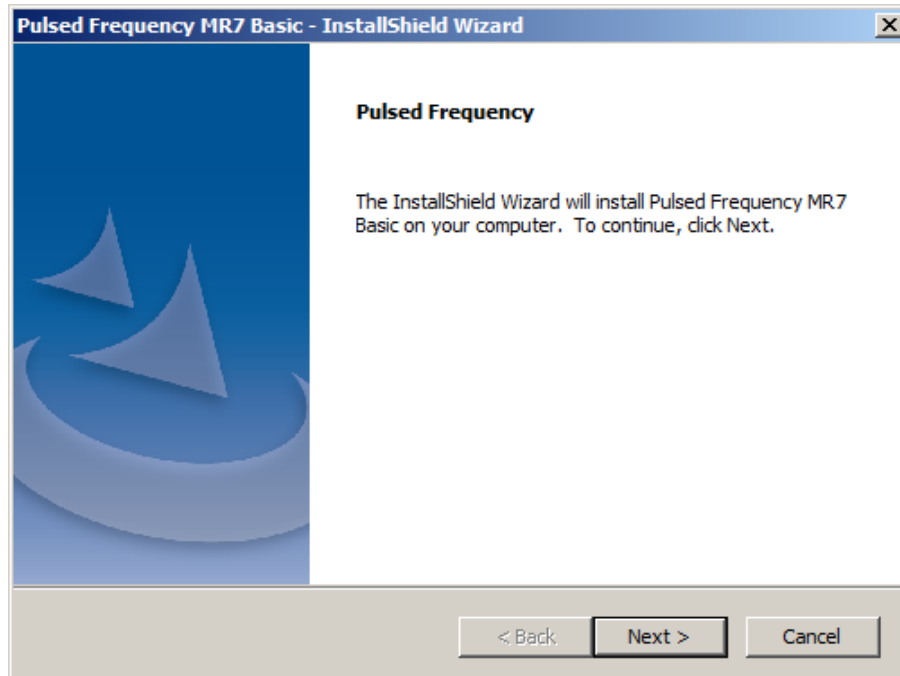
A small window will appear. Click the link in the lower left that says, **Show All Downloads**.



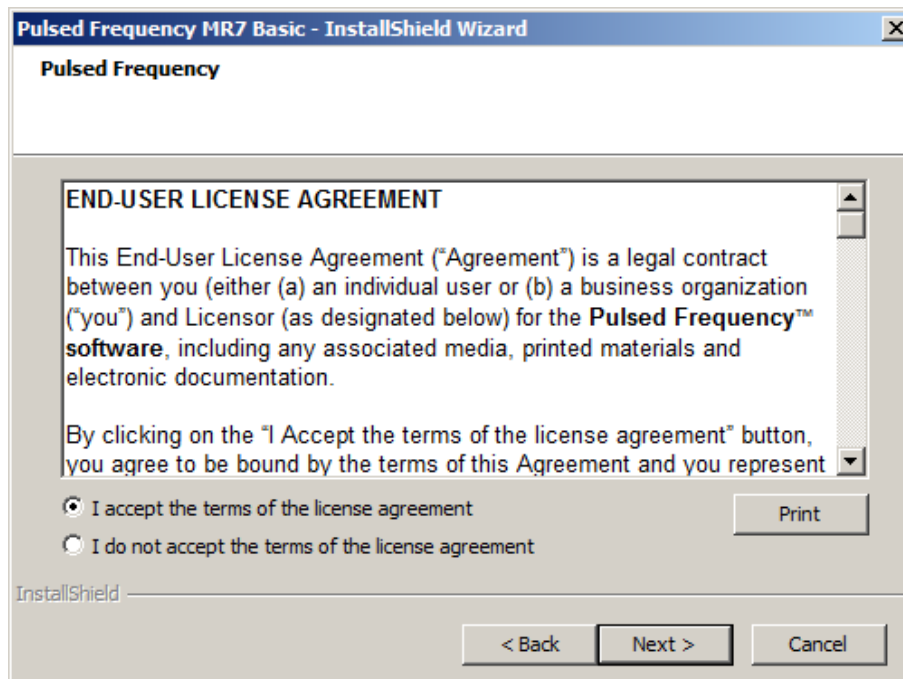
Next, the above window will pop up where you can watch the progress of the downloading file. When the file has downloaded, double-click on PulsedFrequencyMR7Basic.exe and the installation program will run.

## Install the Software

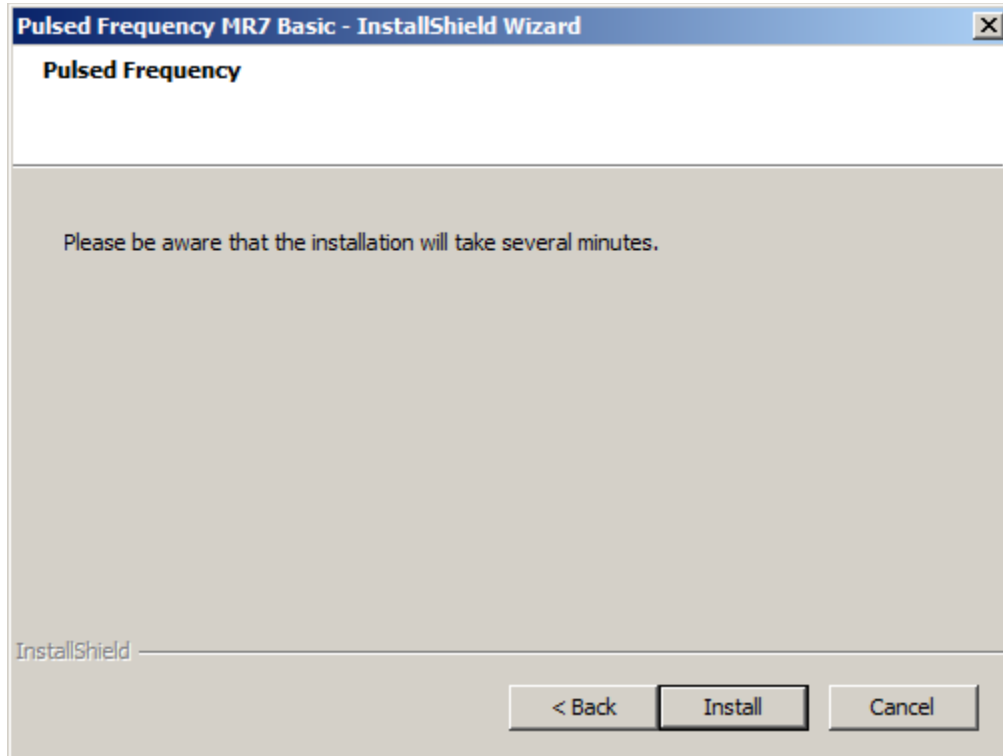
To install the software, double-click on the downloaded file.



On this Welcome screen, click the **Next** button.



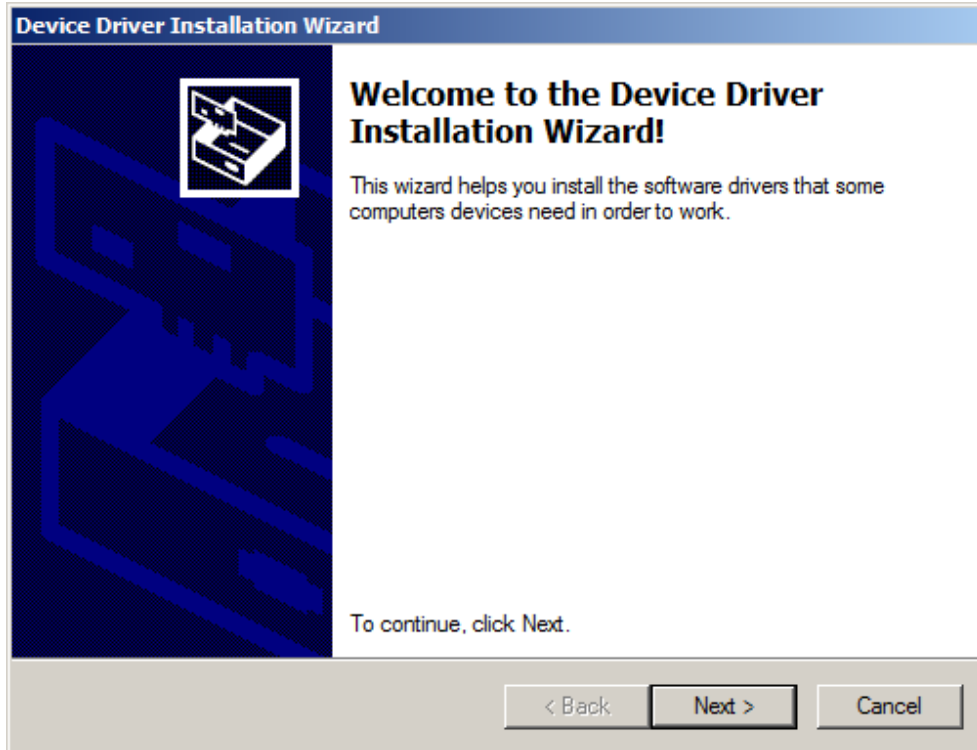
Click **I accept the terms of the license agreement**, then click the **Next** button.



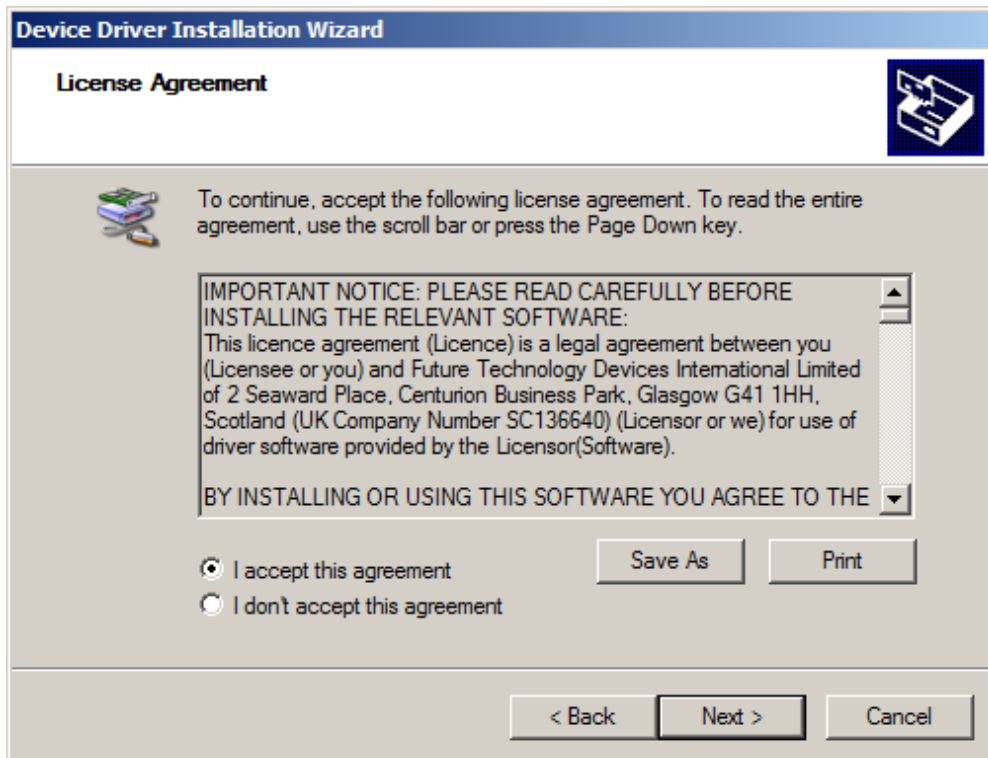
To begin the software installation, click the **Install** button.



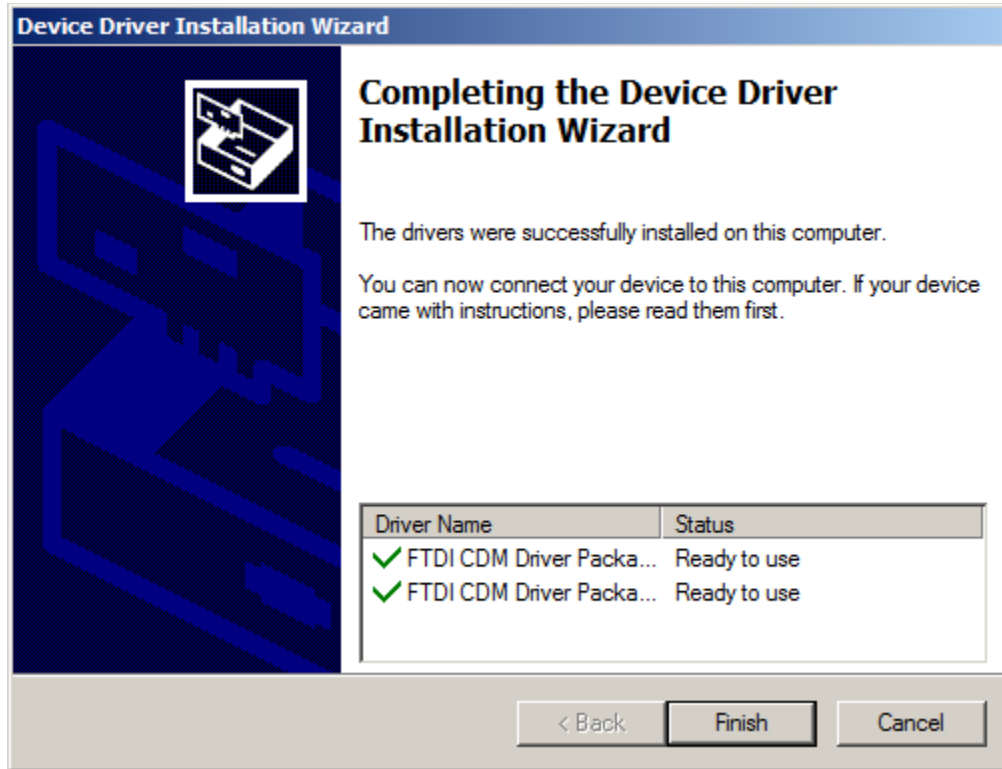
At this point, this dialog box will appear and inform you that the drivers needed for your MR7 will now be installed. Click the **OK** button to begin.



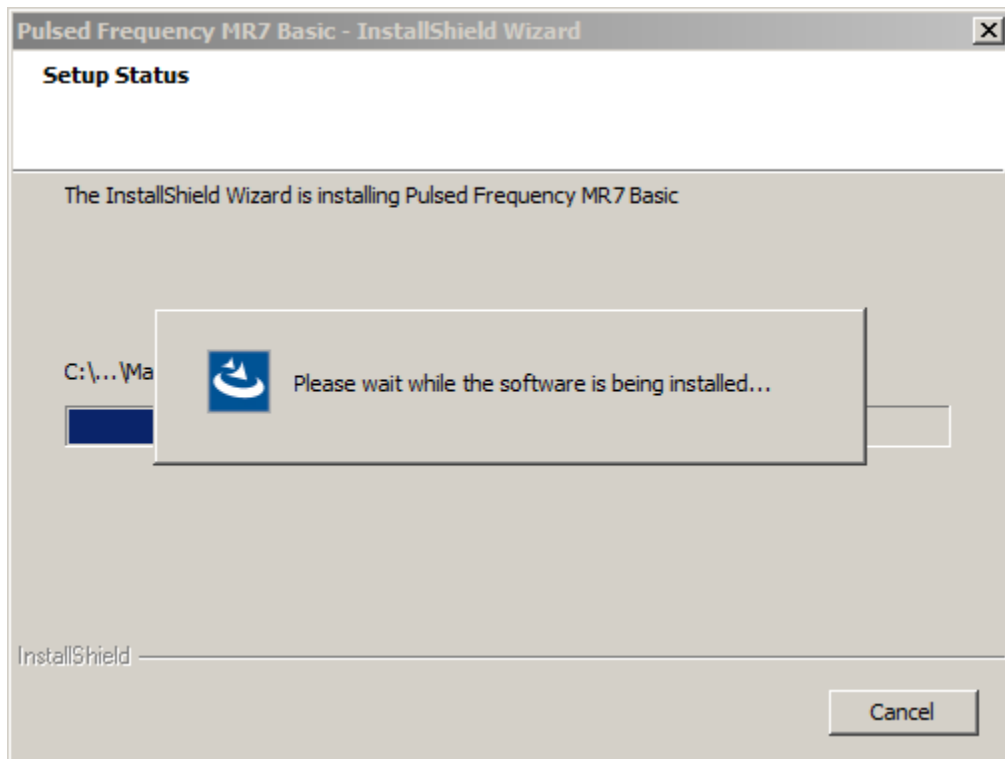
On this screen click the **Next** button.



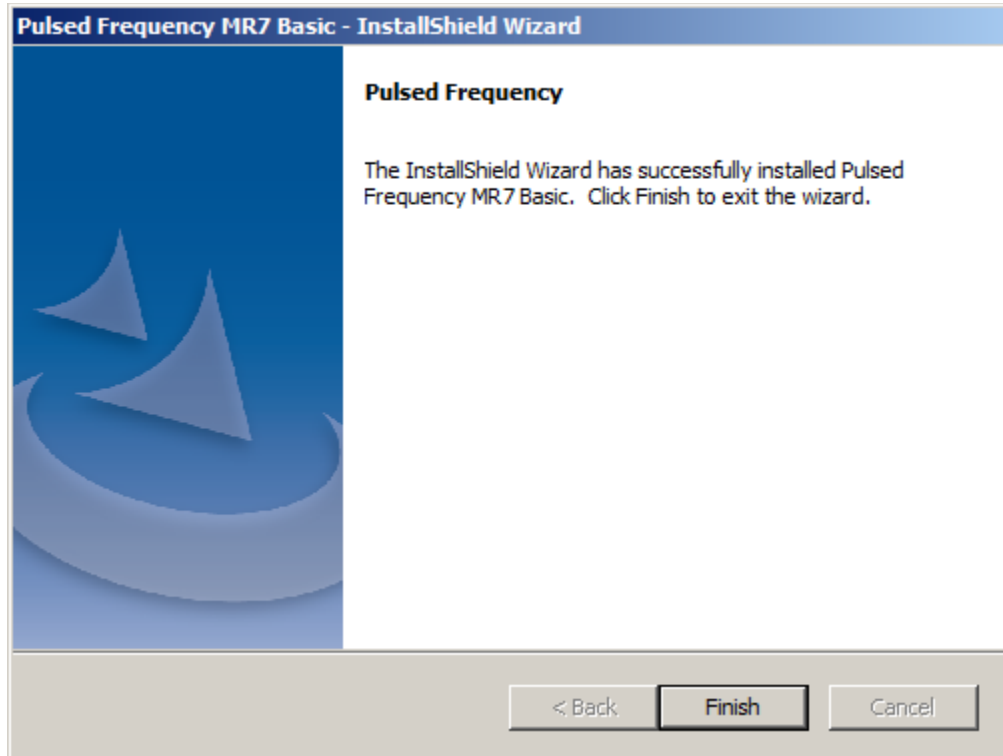
Accept the license agreement, then click the **Next** button.



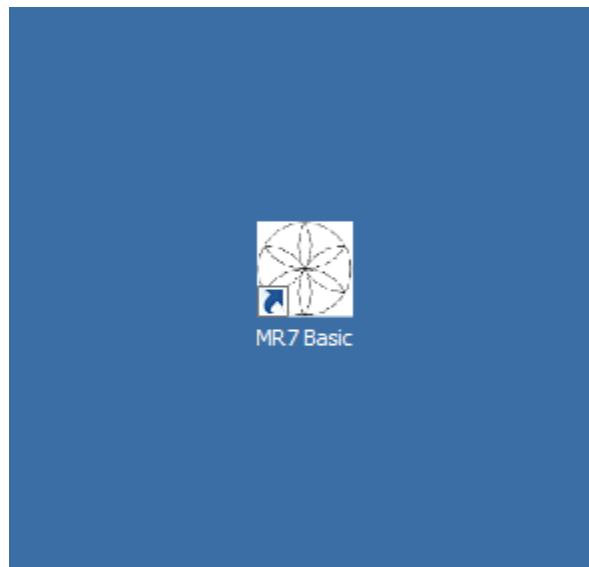
Click the **Finish** button to complete the driver installation.



At this point, the MR7 Basic software will be installed. Just wait until it has completed.



When you see this screen, the installation is complete. Click the **Finish** button.



During installation, a shortcut to the MR7 Basic software was placed on your desktop. You can double-click this shortcut to run the software.




# Just Feel Better!

## The MR7™ Wellness Device

The MR7, is a seven channel, milligauss, magnetic field stimulator that generates seven specific frequency patterns as magnetic fields at one time. The MR7 is Programmable, Light-weight, Pocket-size and has a rechargeable Lithium ion Battery. The MR7 Wellness device is considered to be a Non-significant risk device, by FDA standards.



### MR7™ Operation

To turn on the MR7™, press the ON button. , located on the front panel. When the MR7 is operational, the GREEN RUN LED is on. The MR7 has an internal lithium ion rechargeable battery. If the internal lithium ion battery is low, a RED LED light goes on. To turn the MR7 off, press the ON button for 2 seconds and the GREEN RUN LED will

turn off.

### MR7™ Milligauss Seven Channel Magnetic Field



The milligauss, seven channel magnetic fields are located within the MR7 stimulator and attached to the back panel. To apply the magnetic fields to the body, the backside of the MR7 (opposite side of the power button) must be directed towards the body. The magnetic fields projecting from the backside of the MR7 may be placed over fabric or materials that are non-magnetic, such as a shirt pocket or a pouch. Although the frequency-specific magnetic fields generated by the MR7 affect the whole body, the recommendation is to place the magnetic disc close to the area to be treated.

### MR7™ External Connections



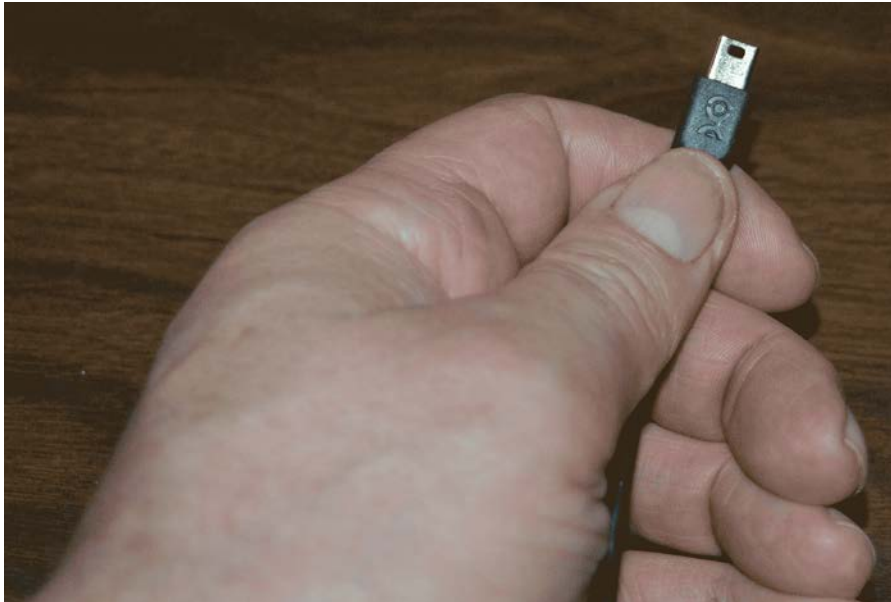
There is one Mini USB port on the side of the MR7. The Mini USB is connected to a standard USB 2.0 Cable with a Type-A Male USB Connector and a Mini Type-B Male USB Connector at the other end. The USB cable is used to recharge the lithium ion battery and program the MR7. When you plug in the MR7 to charge, it will automatically turn off. We suggest charging 1 hour per day to run 24 hours. You can also recharge the MR7 with an AC charger that has a Mini USB end. We suggest you wear your MR7, 23 hours a day, 7 days a week for maximum benefit. It is very important to sleep with your MR7.

### Preparing for Treatment

You will need to drink 60 ounces of purified water each day for the frequency treatment to work. The MR7 is not waterproof or shockproof. Protect it as you would a small computer. **It will cost**

**you \$880 if you break it. Medicare, Medicaid or Health Insurance will not pay for use or loss of the MR7.**

## Connect MR7 to Your Computer



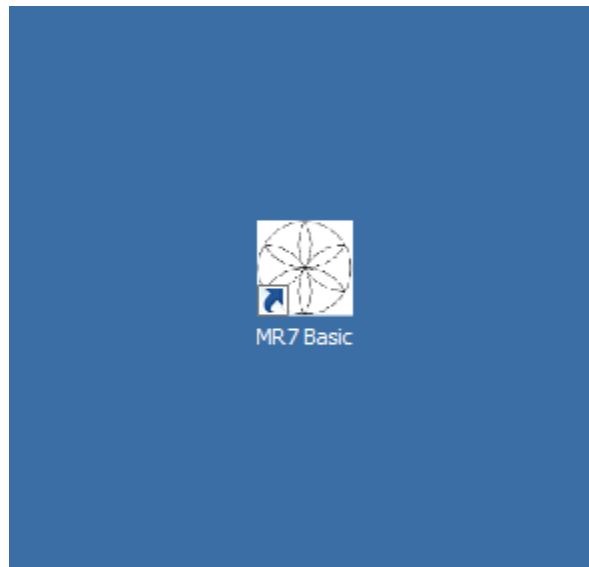
To connect the MR7 to the computer, take the supplied USB cable and orient the smaller end so that the side with the black rectangle is on top.



Make sure the MR7 is OFF and plug the USB cable into the MR7. The MR7 is OFF if the green LED (by the MR7 label) is not lit.



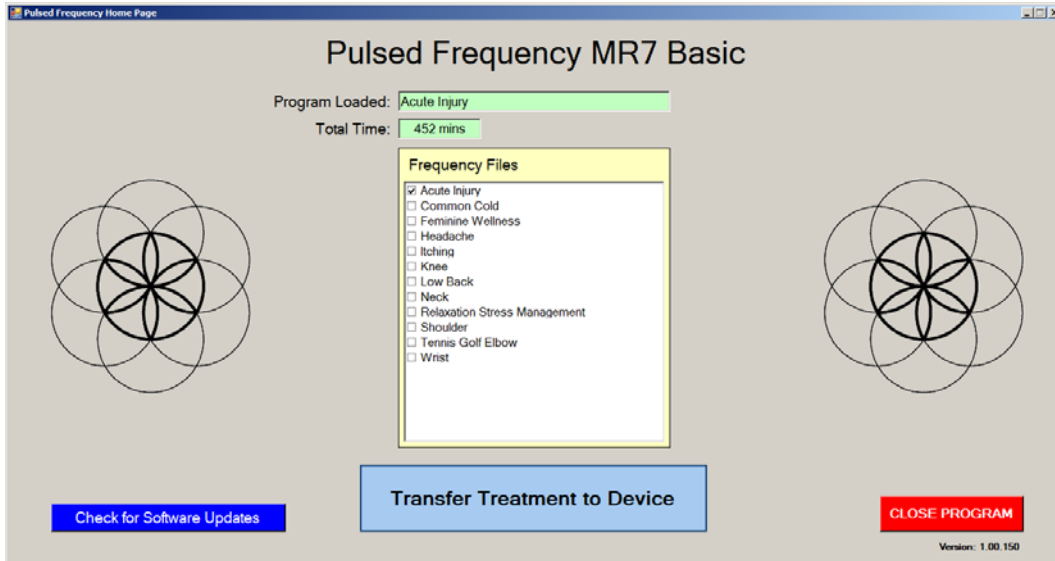
Plug the larger end of the USB cable into your computer.



To run the MR7Basic software, double-click the MR7 Basic shortcut on the desktop.

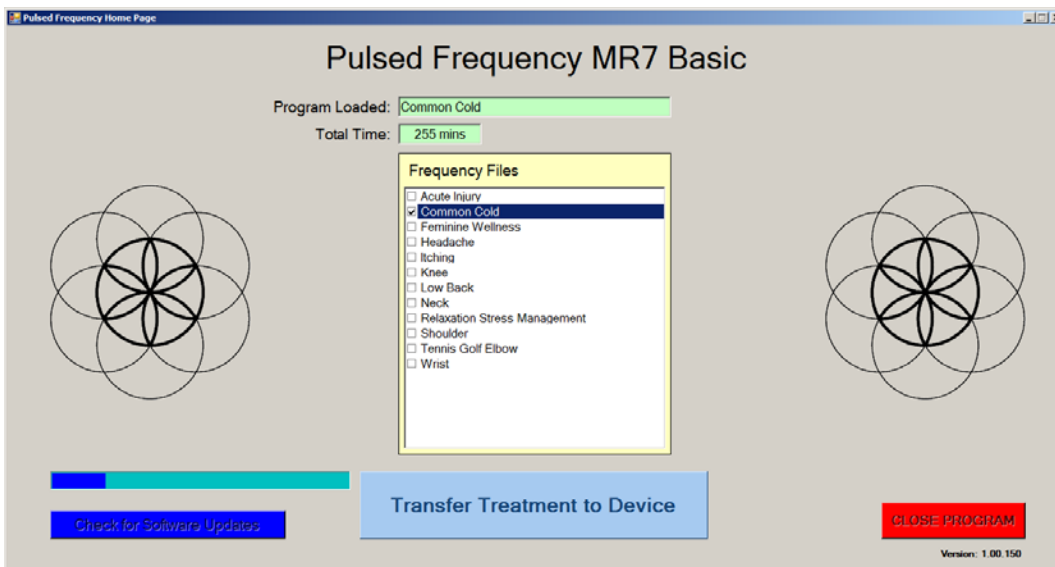
## Load a Program into the MR7

Before running the MR7 Basic software, make sure your MR7 is connected to the computer.



The MR7 Basic software is very easy to use. Select one of the available Wellness programs from the list. When you do this, the program name and amount of time it runs for will be displayed at the top.

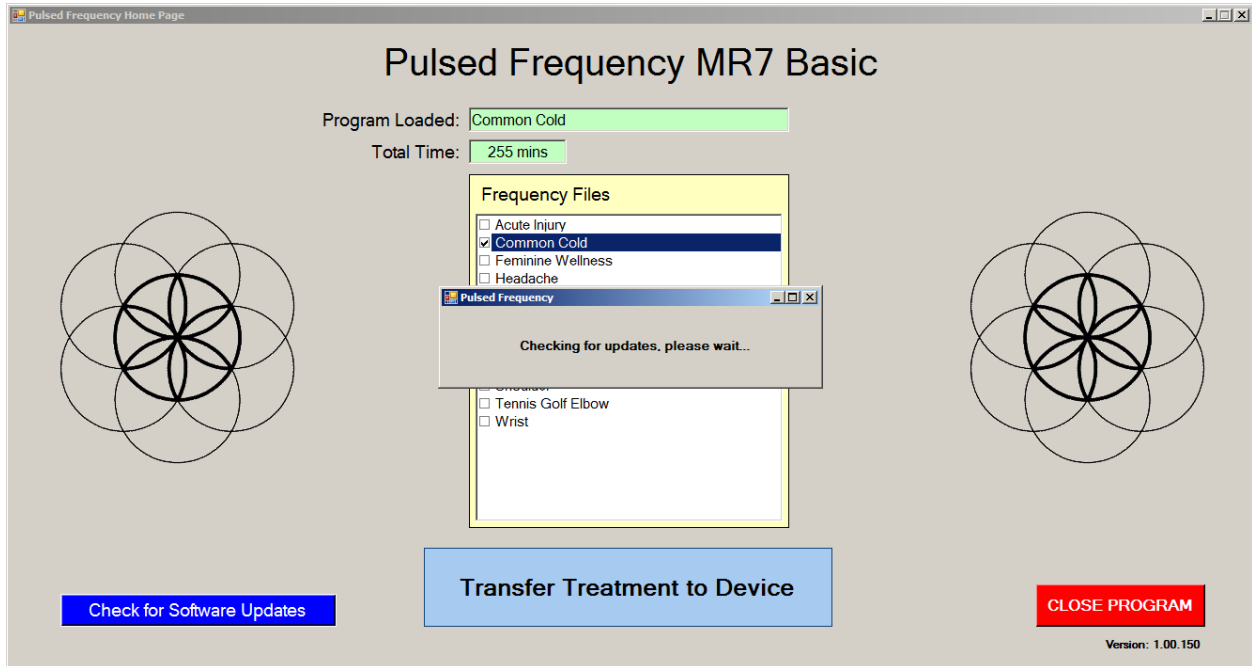
When you are ready, click the **Transfer Treatment to Device** button. The Wellness program will then be transferred to the MR7.



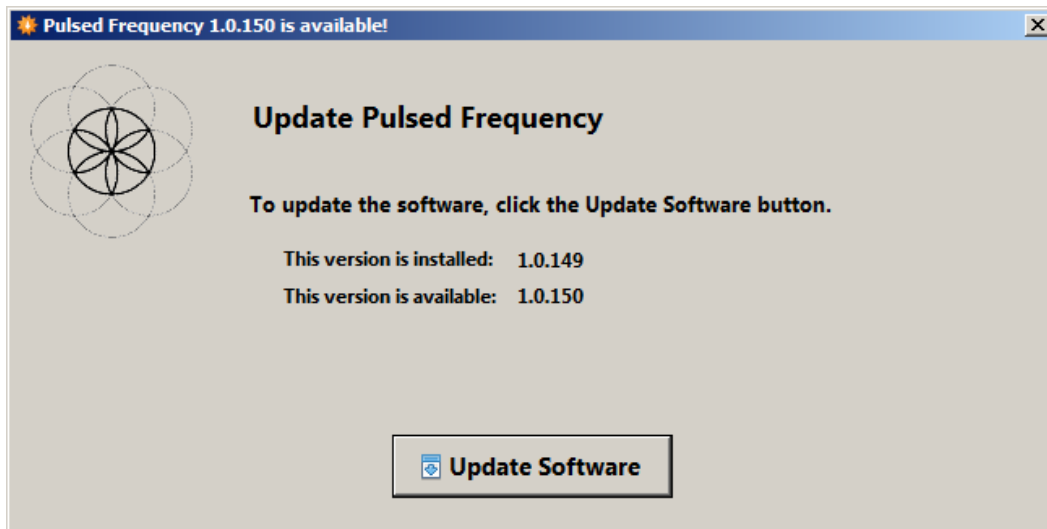
As the program is being transferred, you will see a progress bar at the lower left hand corner of the screen. When the program has finished loading, the MR7 will be ready to use.

## Check for Software Updates

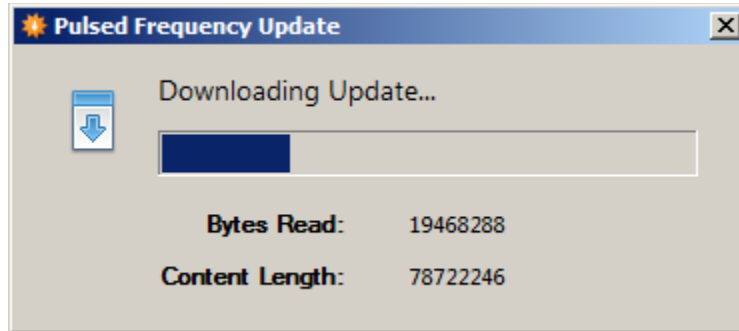
You should periodically check to see if software updates are available for your MR7 Basic software. To do this, click the Check for Software Updates button in the lower left hand corner of the screen.



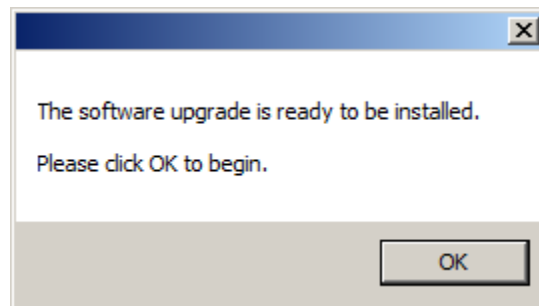
When you click the button, a small dialog box will be displayed telling you the software is checking the server for updates.



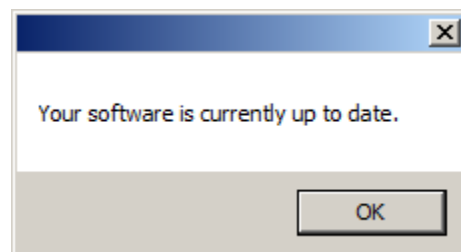
If a software update is available, you will see the above dialog box. Click the **Update Software** button to begin the downloading of the update.



As the software is being downloaded, a progress dialog will be displayed.



When the update has downloaded, the above dialog will be displayed. Click the OK button, the running software will exit and the installation program will run, allowing you to install the update.



Whenever you click the **Check for Software Updates** button and no update is available, the above dialog will be displayed. When this happens, just click the **OK** button to close the dialog box.

# Troubleshooting

If you have problems detecting your MR7 device, you will need to troubleshoot the problem. To do this, exit from the software and try the following solutions.

## Solution 1

The MR7 must be turned off before you connect it to the computer. It does not matter if the software is running or not when you connect the device. The key is that the MR7 must be turned off when you connect the USB cable to it.

## Solution 2

Even though you have the USB cable plugged into the MR7 and to the computer, you may not have a good connection. Unplug the cable from both the MR7 and the computer, then plug the cable back into both places. Next, run the software, click View Frequency Files in Device, and see if the words, "MR7 is not connected" still appear on the screen. If they don't, your problem is solved. You can now proceed to the Software User Guide section. If you still see the words, proceed to Solution 2.

## Solution 3

The most common cause of a connection problem is that Windows cannot see your device. Try plugging the USB cable into a different USB port on your computer. Also, unplug the cable from your MR7 and plug it back in. Run the software again, click View Frequency Files in Device and see if you can see the files loaded into your MR7. If you can see the files, proceed to the Software User Guide section. If you still get the message, "MR7 is not connected", proceed to Solution 3.

## Solution 4

Sometimes, the MR7 can be in an error state, and no amount of plugging and unplugging cables will solve the problem. To test if your device is in an error state, press the power button momentarily, and then immediately let it up. If you hear a beep, the device was in an error state, and you just cleared the error. Run the software again and try to load a treatment onto the MR7. If you are able to, your problem is solved.

## Solution 5

If you are still having a problem, try plugging the larger end of the USB cable into a USB hub. The hub must be powered for this to work. A powered USB hub is where a power cable runs from the hub to an AC adapter that plugs into a wall outlet. With the MR7 plugged into the hub, run the software and try to load a treatment. If you can, your problem is solved.

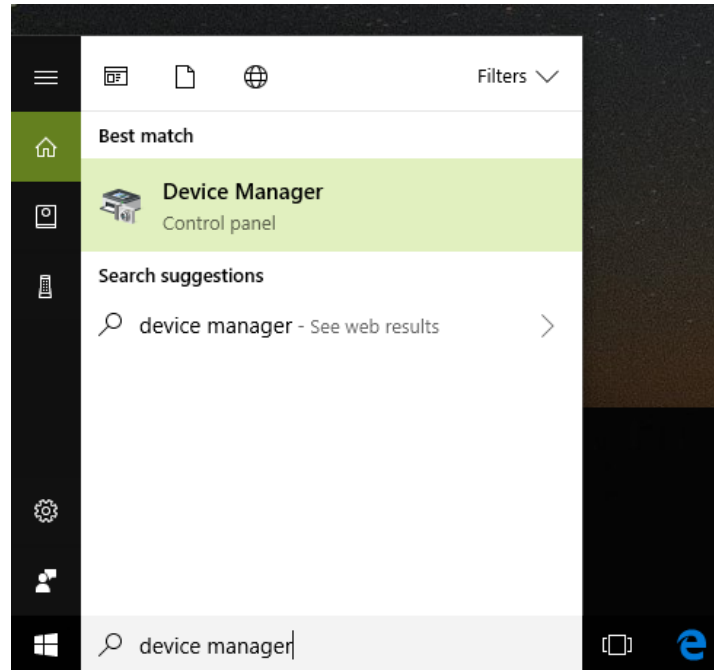


## Solution 6

Another cause of a connection problem is a bad USB cable. If you suspect your cable, then replace it and try again.

## Solution 7

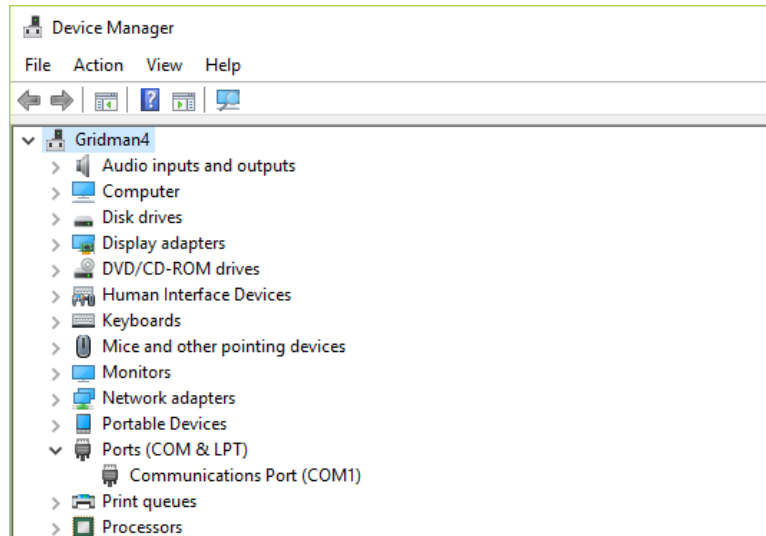
If all other solutions have failed, a final check is to run the Device Manager.



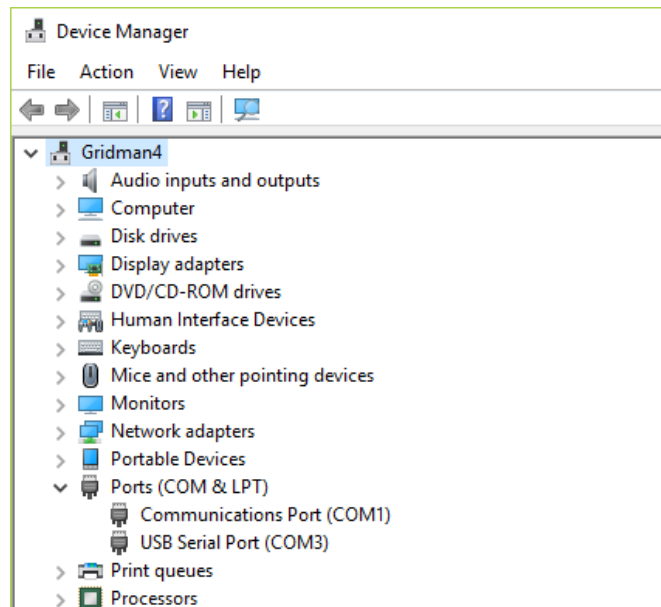
If you are using Windows 10, go to the lower left hand corner of the screen and enter the words "device manager". When that choice appears in the list, click on it.

If you are using Windows 8 or 8.1, click the flag in the lower left hand corner and type "device manager." When that choice appears in the list, click on it.

If you are on Windows 7, click the Start button in the lower left hand corner, and enter "device manager" in the search box. When that choice appears in the list, click on it.



In Device Manager, click the arrow next to Ports (COM & LPT) in order to expand the list. If the MR7 is connected and you see something similar to the screenshot above, then Windows cannot see your device. Try any of the above solutions then come back to Device Manager and look at the list.



When Windows can communicate with your MR7, you will see an entry similar to the one above that says, "USB Serial Port (COM3). It may show a different COM port, but that is okay. The main thing to remember is that when Windows can see your MR7, it will assign a COM port to it. You should now be able to run the software and transfer treatments to the MR7.

## MR7 Manual Detection

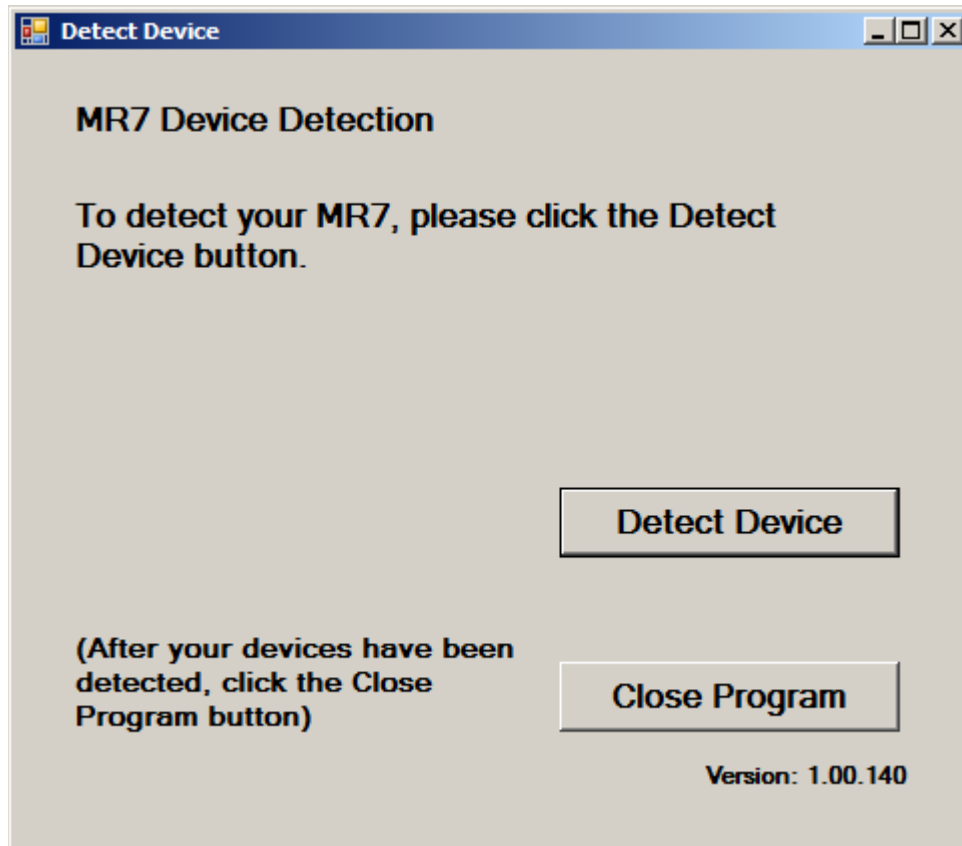
Please follow these steps in order to manually detect your MR7.

On Windows 10, click the Windows flag in the lower left corner of the screen and scroll down the list of programs until you see the Pulsed Frequency folder. Expand that folder and select **Detect MR7**.

On Windows 8 or 8.1, click the Windows flag in the lower left corner of the screen, type "detect mr7" and when that item is displayed in the list on the right, select it to run the utility.

On Windows 7, go to the Start Menu, click All Programs, scroll down to the Pulsed Frequency folder and select the **Detect MR7** program. Make sure your MR7 is not connected to the computer when you do this.

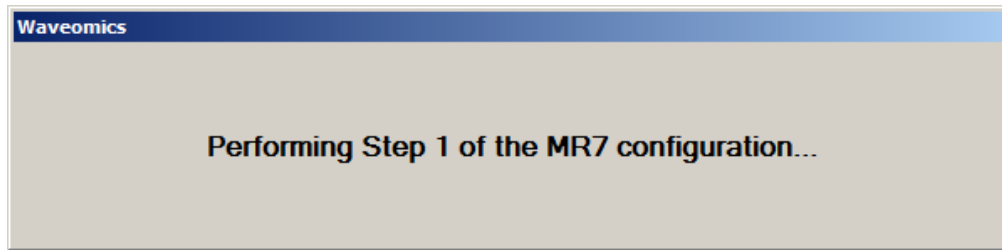
After you have clicked on the shortcut, you will get a warning from Windows saying "Do you want to allow this app from an unknown publisher to make changes to your device?" Click "Yes". Follow the instructions on the screen to detect your device.



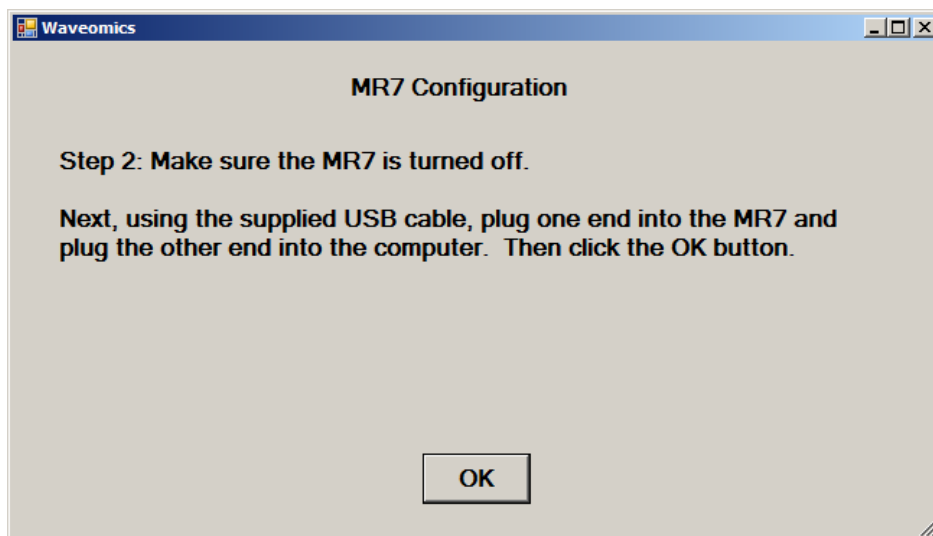
On the first page of the utility program, click the Detect Device button. The following dialog box will then be displayed.



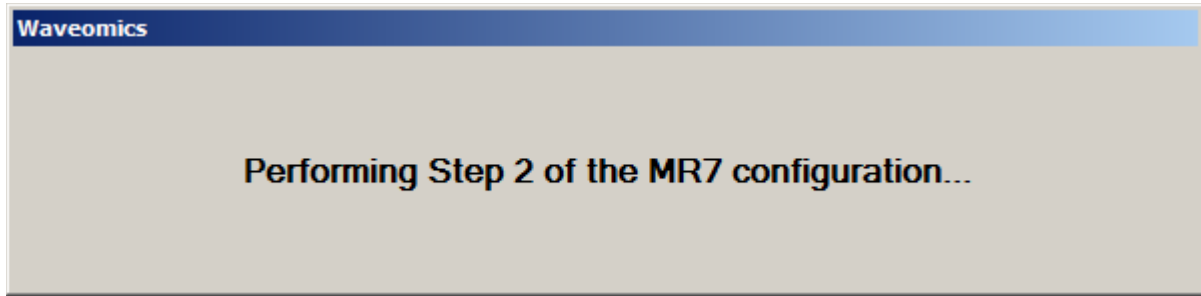
Make sure the MR7 is not connected to the computer, then click the **OK** button.



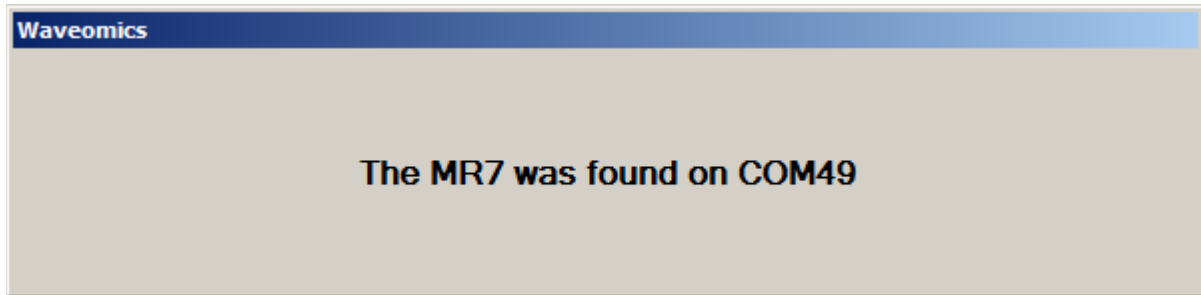
Here, the utility program is looking at your system without the MR7 connected. After this is finished, the following dialog box will be displayed.



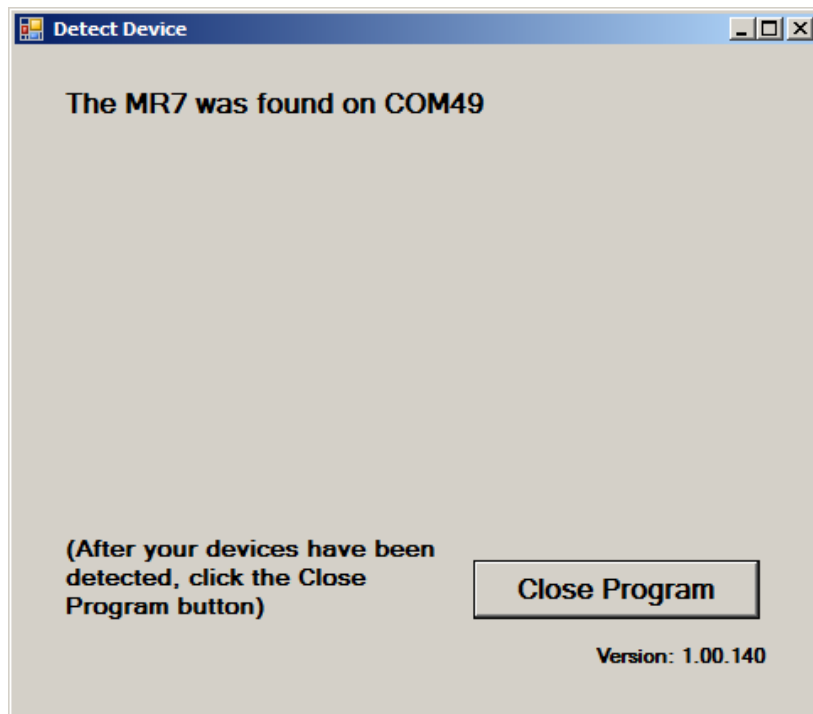
Make sure the MR7 is turned OFF, connect it to the computer, then click the **OK** button.



Here, the program is looking at your system with the MR7 connected.



When your device has been detected, you will be returned to the main screen of the program.



The location of the MR7 will be displayed on this screen and its location will have been saved in the configuration information for the Pulsed Frequency MR7 software. You can now click the **Close Program** button to exit the utility. This completes the manual detection process.

The MR7 Basic can now be run with the MR7. Go to the desktop and double-click on the MR7Basic shortcut.

